

YFC361L THREE FUNCTION MANUAL BED USER MANUAL



Application and features

(1) Scope of application

YFC361L bed is Used for patient's examination,treatment and rest.

(2)Specifications and features

Model No.	Function	Material of Head/End board	Material of sleeping platform	Accessories	Type of castors
YFC361L	Three Cranks	ABS	Molded cold steel sleeping platform	Aluminum alloy side rails, collapsible	Four 125mm castors,cross brakes

II. Parameters

(1)Size(Length*Width*Height)

2160×960mm×500-750mm

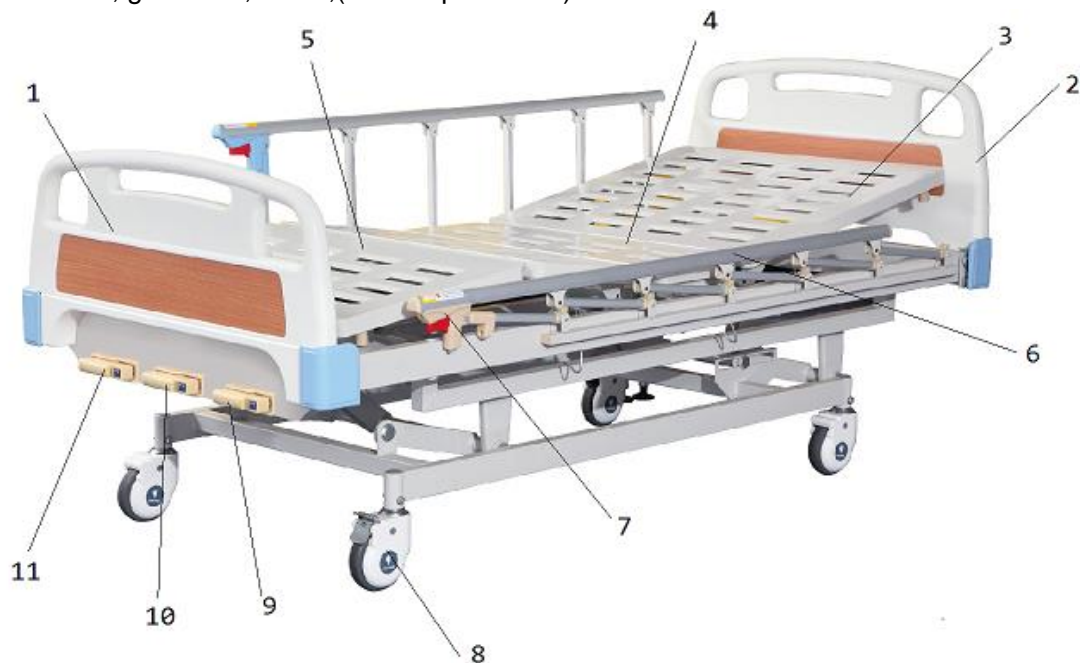
(2)Adjustable angle range

Type	HI-LOW	Back board	Foot board
Adult bed	500-750mm	0°~ ≥75°	0°~ ≥40°

III. Basic structure and instructions:

(1) Basic structure

The YFC361L series medical hand-crank bed is made up of the bed head , bed frame , bed tabula, guardrail ,crank ,(refer to pictures 1)



PICTURE 1

1. Head board 2. Foot board 3. back board 4. sit board 5. Leg board 6. Aluminum alloy guardrail 7. Guardrail lock switch 8. 125mm castors 9. Back section adjustable crank 10. Hi-Low adjustable crank 11. Knee section crank

(2) Functions

YFC361L bed medical hand-crank bed have three functions:

Three functions available

Back section adjustable

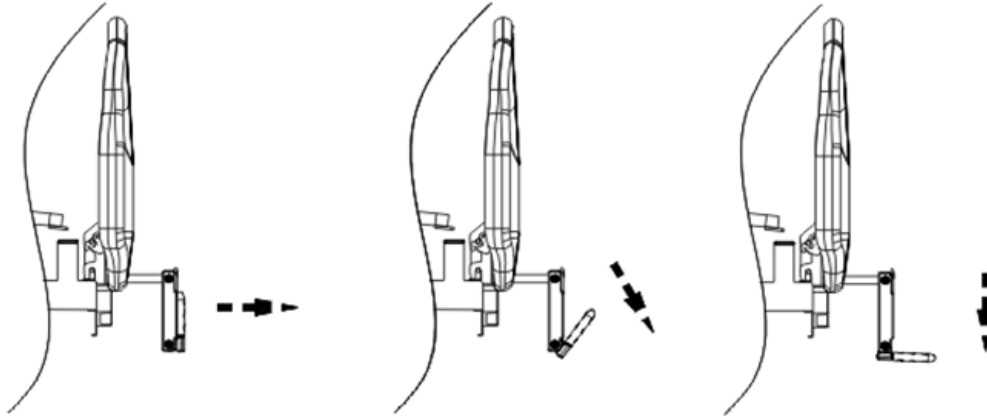
Knee section adjustable

Height adjustable

(3) The adjustment of the bed surface' s position(refer to picture 2)

Adjustment operation(From left to right)

Take out the crank from the box to start operation



PICTURE 2

Foot board:Waving the 1st crank (part 8 of picture 1) to adjust the foot board from 0° to 40°

Back board:Waving the 4th crank (part 11 of picture 1) to adjust the back board from 0° to 40°

HI-LOW:Waving the 2nd and 3rd cranks (part 9 & 10 of picture 1) together to adjust the height

(4). The bed body's moving or positioning.

There are four castors Two of the casters are have brake. They are diagonal assembly .

The casters with brake have the foot brake pedal, When the brake pedal is loosen, the bed body can moved , After locking , the bed body is positioning.

(5) “Hands folding aluminum alloy guardrail “ (short for “ aluminum alloy guardrail”) lifting and down operation (refer to pictures 1)

“ aluminum alloy guardrail “ (two pcs) are installed on both sides of the bed frame.

When the “aluminum alloy guardrail “ are in the working status (top) ,use press”7guardrail lifting and down swift”, make the rail leave the located position, pull the rail to the foot board, then the rail can be folded to the lowest position.

When “A-alloy Rail” is under non work condition (lowest position), push up rail lifting and down swift, make the rail leave the locked position, pull the rail to the direction of bed head board, when reach the highest position, loosen the switch, then the rail locked again, that is up locked.

IV.Configuration instructions

- 1.when the patient is a prone position , please don't lifting the back board (It will cause harm to patient)
2. Please don't climb to end of bed or head board , because it maybe leads to accidents.
3. In addition to moving bed , you need to lock the casters at any time.
4. In the operation, you need to pay attention to the patient's condition, when you change the patient's condition based on the doctor's advice.
5. It need enough space for laying the bed , about 10cm from bed to wall , it is order to easy change the bed's position.
- 6.Don't moving the bed on the uneven ground , it maybe cause the castors damage . If can't avoid , please move slowly.
7. The hand-crank is folding, if do not need use, the crank can be turn 90 degree.
8. The screw rod and nut second crank is under the conditional of none work, should turn the crank about 90 degree, and keep it in the crank handle seat.

V.Using/operating and matters needing attention:

1. If the casters with brake did not relax completely , Don't move the bed , in order to avoid damage the casters. When the bed is positioning , need to put the brake casters are locked and prevent the bed moving .
2. When the shake handle is non-working state ,it should be rolling-over 90 into the handle seat.

VI.Open box /inspection and installation ,commissioning.

- 1.open box and inspection , the medical hand-crank bed is separate package when it is away from the factory . The main body is in bundle , the other parts are carton packing . After open the box , first of all check whether of the random file is complete, inspection certificate , operation instruction and packing list (each have a copy of them). Please check whether the mian body and parts are complete based on the packing list. Random file should be properly kept and prevent lost .
- 2.Please read the instructions carefully before the medical bed installation and use.
- 3.The installation of medical hand-crank bed : please installation it based on picture 1 and avoid crash.
- 4.Medical hand-crank bed should be installed on a flat ground, so as to avoid bumps and affect the normal use.
- 5.Before use it , the medical hand-crank bed should be on the basis of "manual" instructions for trial operation(commissioning), when the everything is normal then put is into use officially.

VII. Care and maintenance

1. Medical hand-crank bed 's plating and paint pieces surface should prevent bruising and crushing
2. When the medical hand-crank bed is use full a year, it should clear away the oil contamination with screw and nut second hand transmission mechanism. Than inject the new grease (butter) and order to easy operation ,flexible and increase of use life.

VIII. Commitment to quality , service and contact information:

(1)Quality commitment: the medical hand-crank bed leave the factory within one year , if it have the manufacturing quality problems , we are repair it of free. If we can't solve it , we will replacement it for free.

(2)Service: Our company provide the “ lifelong service” for the medical hand-crank bed , According to user needs , we can go to the home for site installation, commissioning ,maintenance and service guide . The damage caused by improper operation , we only charge the cost of fees.

IX. Others

If the product's appearance and individual technical parameters are change , We are without of inform you .