



# Stone Model and Tray Fabrication Instructions

For Zoom DayWhite and NiteWhite

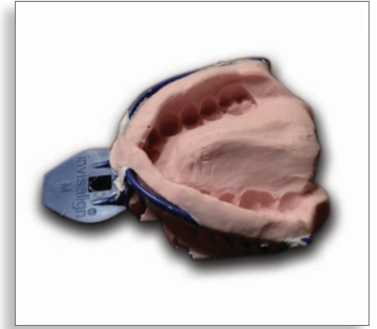


**PHILIPS**

**ZOOM!**

# Stone Model

1. To take accurate alginate impressions, make sure that all gingival margins facially and lingually can be seen, and no incisal edges or facial tooth surfaces hit the tray.
2. Spray impression with **Philips Speed Spray** for sharp, crisp details and bubble-free models.
3. Fill impression with stone, plaster or similar material, utilizing a lab vibrator to reduce/eliminate bubbles. For quicker results, use **Philips Speed Stone**, which solidifies quickly and allows separation from the alginate impression within five to ten minutes.
4. Trim stone mold so that it extends 3-4mm past the gingival margins. The base should lie flat in a horseshoe shape and not exceed a thickness of 5mm.
5. Spray dry stone models with **Philips Speed Release** to prevent vacuum forming material from sticking or binding. This will also allow the stone model to be removed quickly and easily from the EVA material.
6. Scribe a line at the CEJ with a sharp dental instrument. Remove all stone blebs, voids or bubbles from the stone model.



**Remember:** *The better the mold, the better the final tray, the better the results!*

# Tray Fabrication

1. With the **Philips Vacuum Former**, place the plastic tray material into the vice and turn the knob to tighten. Do not over tighten, or the tray will spill out over the sides. Lift the tray up toward the heating element. Turn the heating element on.
2. Heat the EVA material until it sags 15mm (do not let the plastic droop below 1 to 1½ inches). You will see ripples in the plastic as it begins to heat. Once the ripples are gone, you are ready to start the vacuuming process.
3. Activate the vacuum by lowering the tray material into place until it's directly above the mold and apply a vacuum for 20 seconds to ensure proper adaptation.
4. Run the plastic and the stone mold under cold water to thoroughly cool it and prevent distortion before removal.
5. Trim off excess material around the base of the mold with large utility scissors. Take a ballpoint pen and mark the facial gingival margins directly on the EVA tray material. Carefully ease the tray off the mold. Do not allow the tray material to turn inside out while removing.
6. Scallop the facial aspect of the tray with **Philips Trim Scissors** to ensure comfort for the patient and prevent the gel from contacting the soft tissue.
7. Follow the ink line and trim 0.5mm in front of the ink line. Scalloping is optional for the lingual, but DO scallop the lingual incisal papilla area directly behind the two front teeth. Trim the rest of the lingual in a straight line just below the gingival margins. The tray is most comfortable for the patient when you make one consistent scalloping cut from one side to the other.\*
8. Place the trays on the original stone molds and check for gingival extensions more than 0.5 mm past the gingival margins. Take an alcohol wipe and remove the ink mark from the trays.
9. Leave the trays on the stone molds until final delivery, and then wash it in cool, soapy water and cold-sterilize the mold. When reviewing the whitening kit contents with the patient, place the patient's custom trays in the case provided.



\* Be careful when trimming not to cut too close to the gingival margins. A micro torch can be used to smooth rough edges. Be careful not to burn yourself or the tray (the flame is actually much longer than it appears). See the detailed Dental and Laboratory Instructions that come with the EVA material provided by Philips Oral Healthcare.

Whether crafting a stone model or fabricating custom trays, we have a wide variety of materials specially selected to help service your whitening needs.

## Vacuum Former

Ideal for creating your custom trays in office, with a W-shaped heating element to help ensure uniform heat distribution. One-year parts and labor guarantee.



Product	Item
Vacuum Former	
Vacuum Former	NWD1004

## Tray-Trimming Scissors

Perfect for precision shaping and trimming whitening trays, these surgical-quality stainless steel scissors have a serrated handle and spring-action mechanism for greater control and ease of use.



Product	Item
Tray-Trimming Scissors	
Tray-Trimming Scissors	DB2546

## EVA Tray Material

This .040mm material for making custom trays is soft, flexible and resistant to curling.



Product	Item
EVA Tray Material	
Double Arch Tray Case - Pearl White	15-1327
.040 EVA Tray Material Contents: bag of 6	15-1629
.040 EVA Tray Material Contents: bag of 12	15-1630



Speed Stone



Speed Release



Speed Spray

## The Speed System

Tray making is a breeze with this three-part system.

**Speed Stone:** We recommend hand-mixing this Class IV model stone. It has a 1 ½ minute working time and a total set time of five minutes.

**Speed Release:** This silicone spray prevents tray material from sticking to instruments and the mold.

**Speed Spray:** A surfactant spray that helps create bubble-free models, producing clear, crisp detail while reducing surface tension.

Product	Item
The Speed System	
Speed Stone - 4.5 lb. jar (Min. 12)	NWD1032
Speed Release - 16 oz. can	NWD1042
Speed Spray - 8 oz. bottle	NWD1043

Call (800) 422-9448

or visit us at [philipsoralhealthcare.com](http://philipsoralhealthcare.com)