

SEED 1 day Pure Up EDOF

Prepared in February 2019 (version 1)

SEED 1 day Pure UP

[Warnings]

1. Wearing contact lenses ("lenses" hereinafter) may lead to corneal ulcer, keratitis (including infectious keratitis), corneal infiltration, corneal epithelial disorders such as corneal erosion, corneal edema, conjunctivitis (including giant papillary conjunctivitis), iritis, and corneal neovascularization, and accelerate loss of corneal endothelial cell density.

If left untreated, disorders due to use of lenses may lead to blindness.

2. To prevent eye disorders, observe the following instructions when using and handling lenses
 - (1) Keep to the specified wear schedule.

The wear schedule differs for each individual. Follow the wear schedule specified by your eye doctor.
 - (2) Note the expiration date specified for your lenses.

These lenses are one-day disposable (single use) lenses.
 - (3) Use the lenses according to the procedures given.

Improper use of the lenses may lead to eye disorders. Please use them correctly according to the procedures.
 - (4) Get regular contact lens checkups.

Note that eye disorders and lens damage may occur without subjective symptoms. Get regular contact lens checkups as instructed by your eye doctor even if you experience no problems.
 - (5) Consult your eye doctor immediately if you experience any problems or notice anything unusual.

Confirm that your eyes are free of unusual redness or discharge before inserting the lenses. No discomfort or irritation should occur during use. If you experience discomfort or problems, consult your eye doctor.
 - (6) Never use torn or otherwise damaged lenses.

Always inspect your lenses to confirm they are free of tears and other damage. If you experience persistent symptoms that may be due to lens damage, consult your eye doctor.

[Contraindications]

- 1. Contraindications (patients):** Do not use the lenses if any of the following applies:
 - Acute or subacute inflammation in the anterior ocular segment
 - Ocular infection
 - Uveitis
 - Reduced corneal sensitivity
 - Dry eye or lacrimal apparatus disease affecting lens use
 - Abnormality in the eyelids
 - Allergic disease affecting lens use
 - Living or working in dry environments
 - Living or working in an environment where dust or chemicals are likely to enter the eye
 - Unable to follow the recommendations of your eye doctor
 - Unable to use contact lenses properly
 - Unable to get regular checkups
 - Unable to follow the hygiene routine required to wear contact lenses
- 2. Method for use**
 - Do not wear someone else's lenses or give your lenses to someone else.
 - Dispose of the lens after removal. Do not reuse.

[Shape, structure, and principles]

- 1. Composition of the lenses**
 - (1) Soft contact lens classification: Group IV
 - (2) Monomer component: 2-HEMA, methacrylate compound with quaternary ammonium group, methacrylate compound with carboxyl group, MMA and EGDMA
 - (3) Water content: 58%
 - (4) Oxygen permeability coefficient: $30 \times 10^{-11} \text{ (cm}^2\text{/sec) \cdot (mLO}_2\text{/(mL} \times \text{mmHg))}$
 - (5) Colorant: Phthalocyanine colorant (color of lenses: blue)
 - (6) UV absorbing component: Benzotriazole UV absorbing component
 - UV absorption rate: for diopter -3.00D
 - UV-A: $\geq 35\%$
 - UV-B: $\geq 50\%$
- 2. Storage solution**

Major ingredients of the storage solution: Sodium chloride, nonionic surfactant, alginate, borate buffer, and EDTA
- 3. Principle**

These soft contact lenses are intended to correct vision based on optical principles.

[Purpose of use or effect]

To correct vision

[Method of use]

Daily wear, one-day disposable (single use)

<Precautions for use>

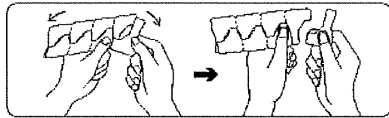
1. Inserting/removing the lenses

(1) Lens handling precautions

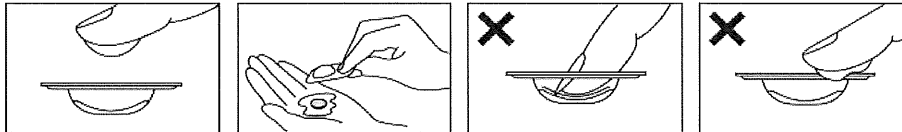
- Keep your fingernails short and smooth.
- Wash your hands with soap before handling lenses.
- Do not dig your nail into the lenses or touch the eyes directly while inserting/removing the lenses.

(2) Removing the lenses from the packaging

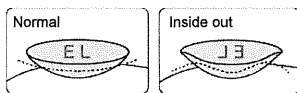
- Cut the blister package by folding the sheet as shown in the figure.
- Be careful to avoid cutting your hands or fingers on the blister packaging or label while opening the container.



- Remove the lens gently from the packaging by gently pressing the lens against the pad of your index finger. Be careful to avoid damaging the lens. Alternatively, turn the blister packaging upside down and empty the lens together with the storage solution into the palm.



- Inspect the lens to determine which lens is for the right eye and which lens is for the left eye. Check to determine the inside and outside of the lenses. Normally, the mark can be read from the concave side without distortion.



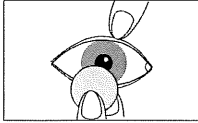
*Exemplary identification of inside/outside

(3) Inserting the lens

- 1) Place the lens onto your index finger. Then, pull down on your lower eyelid with the middle finger of the same hand, and pull up on the upper eyelid with the index finger of the opposite hand. Placing your fingers on your eyelash line helps you open your eye wider.



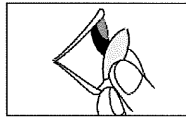
- 2) Look in the mirror so that the cornea comes into the center of the eye. Slowly bring the lens close to your eye and put it gently in place while looking in the mirror. If you glance upward in this time, you cannot center the lens on the cornea correctly.



- 3) When you have placed the lens properly on the cornea, slowly release your index finger and then release the fingers holding the eyelids in the order of the lower eyelid and upper eyelid. If you release the fingers quickly or blink, the lens may move or fall out.
- 4) Check in the mirror that the lens is in front of the cornea. Also, cover the opposite eye with your hand to check your sight in your right and left eyes.
- 5) Follow the same procedure to fit the lens in your other eye.

(4) Removing the lens

- 1) Check the position of the lens in the mirror.
- 2) Facing front, raise the mirror and look at your eye in the mirror.
- 3) Gently pull down on the lower lid and slide the lens down with the index finger of the same hand.
- 4) In this position, gently take hold of the bottom of the lens to remove the lens with the pads of the thumb and index finger.



2. Wear schedule

- (1) These lenses are daily wear one-time disposable (single use) lenses. Wear these lenses only while awake. Remove them before going to bed.
- (2) The time and wear schedule required to become accustomed to the lenses varies from person to person. Follow the instructions given by your eye doctor to accustomize to your lenses at the optimal pace for you.

[Exemplary schedule]

Days	1	2	3	4 to 6	7 and thereafter
Hours	6	8	10	12	All waking hours (12 to 14 hours)

- (3) In cases in which contact lens use is suspended for:
 - Less than a week: Start with shortened use by 2 to 4 hours.
 - A week or more: Start with the above schedule as in the first use.
 - A month or more: Consult your eye doctor before starting to use the contact lenses.

3. Regular checkups

Get regular checkups one week, one month, and three months after the first use, and then every three months, or according to the instructions of your eye doctor.

[Precautions]

1. Important basic precautions

- (1) Carefully read these Instructions for Use before using your contact lenses. Keep the Instructions in a safe place for future reference. You can also browse the Instruction for Use on SEED website.
- (2) Consult your eye doctor if you have an allergic disease. Allergic conditions may increase the likelihood of adverse events.

2. Problems/adverse events

The following problems and adverse events may occur:

(1) Problems

Lens: Tearing, scratches, deposits (soiling), deformation (bending) and discoloration

Storage solution: Empty, discoloration/alteration

Package: Breakage, liquid leakage, dirt, and wrong number of lenses in the packaging

(2) Adverse events

Corneal ulcer, corneal abscess, corneal perforation, corneal infiltration, corneal erosion, keratitis, corneal epithelial disorders such as corneal epithelial staining, corneal edema, corneal neovascularization, conjunctivitis, subconjunctival hemorrhage, iritis, hordeolum, meibomitis, chalazion, ptosis, accommodative asthenopia, dry eye, and loss of corneal endothelial cells

<Symptoms and countermeasures>

- Do not use forcibly if your eyes are in bad condition or you are unwell.
- Try the following countermeasures if you experience any of the following symptoms while using the lenses.

If symptoms persist, immediately consult your eye doctor.

Symptoms	Countermeasures
Foreign body sensation, pain, itching, clouding, unusual eye discharge, and unusual redness of the eyes	<ul style="list-style-type: none">• Replace the lenses with new ones.• If the symptoms occurred after extended periods of wear, try wearing them for shorter periods.
Unstable visual acuity, difficulty in seeing, and eye strain	<ul style="list-style-type: none">• Replace the lenses with new ones.• If the symptoms occurred after extended periods of wear, try wearing them for shorter periods.
Feeling of dryness	<ul style="list-style-type: none">• Blink several times to produce more tears.• Use an eye drop for soft contact lenses.

3. Use by pregnant, parturient and breastfeeding women and children

- (1) If you use medication or eye drops or if you are pregnant or have just given birth, consult your eye doctor. Your condition may affect lens use.
- (2) A child should use the lenses under supervision of parents.

4. Use by elderly people

For use by an elderly person or a person having difficulty in wearing the lenses by him/herself, consult the eye doctor to ask for appropriate instructions.

5. Other precautions

- (1) Take spare lenses and glasses with you in case you lose or have to stop using the lenses.
- (2) Before traveling abroad, check conditions at your destination and bring the lenses required and lens care products or determine how to buy them there.
- (3) Put on make-up after inserting the lenses and remove the make-up after removing the lenses.
- (4) Do not allow cosmetics to come into contact with the lenses.
- (5) It is advisable to use artificial tears, without preservatives, for soft contact lenses while wearing the lenses. Other eye drops should be used under the instructions of your eye doctor.
- (6) Remove the lenses before swimming.
- (7) Wear contact lenses for driving or operating machinery only after you are used to them. If a lens dislodges or falls out while you are driving or operating machinery, stop driving or operating the machinery promptly after making sure that it is safe to do so.
- (8) The vision through these lenses is different from that through glasses or unifocal contact lenses. If your vision varies depending on the brightness or change in brightness, consult your eye doctor.
- (9) If your eyes are exposed to strong wind, use some kind of protection against wind (e.g., goggles).
- (10) If you get anything in your eye while wearing the lenses, immediately remove them. Consult your eye doctor if you notice symptoms.
- (11) Do not wear one lens on top of another lens.

[Storage and expiration period]

1. Storage: Store at room temperature avoiding direct sunlight and freezing.
2. Expiration period: The expiration period of the lenses is indicated on the outer carton and container of the lenses. Open the package and use before the expiration period.

Example:  YYYY-MM means "Expiration period is Month MM Year YYYY."

[Name of Marketing Authorization Holder and Manufacturer]

<Marketing Authorization Holder>

SEED Co., Ltd.
2-40-2 Hongo, Bunkyo-ku, Tokyo
Phone (switchboard): 03-3813-1111

[Contact information]

<Inquiries about symptoms>

For symptoms related to use of the contact lenses, consult the eye doctor who prescribed the lenses.

<Inquiries about products>

We make every effort to ensure quality. However, if you should find any abnormality in the lens or packaging, keep the product without using it and consult your eye doctor or supplier.

* Package labeling

P	Vertex power	STERILE	Sterilized using steam or dry heat
BC	Base curve	LOT	Production lot
DIA	Diameter	⌚	Expiration date
EDOF	Extended focal depth	紙	Package material: paper
Lo	Low (low focal depth)	プラ	Package material: plastic
Mid	Middle (middle focal depth)		
Hi	High (high focal depth)		

