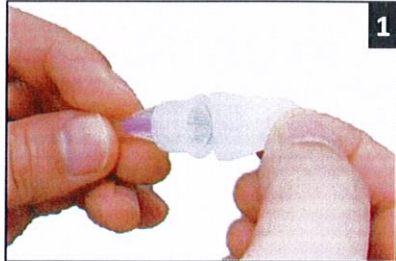
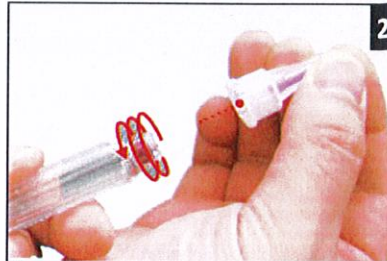


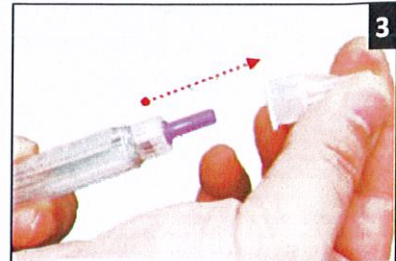
Read carefully the whole instructions before use!



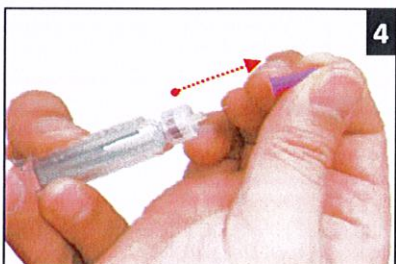
1. Remove the protective blister paper



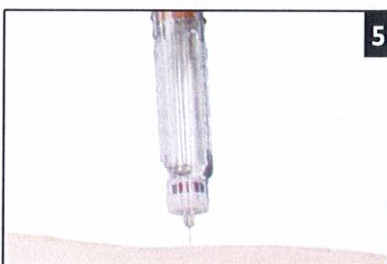
2. Press straight down on the pen and screw until locked



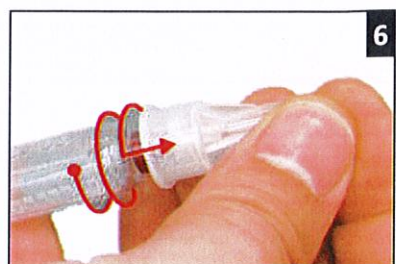
3. Remove and save the outer protective cap



4. Remove the inner protective cap



5. Inject the insulin according to your healthcare professional's instructions



6. Replace the outer protective cap unscrew and dispose of the used needle safely

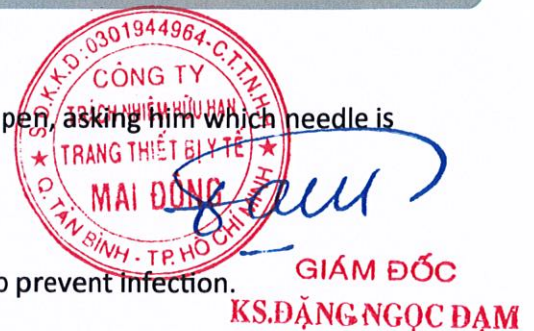
HARMOFINE® insulin pen needle fits all major brands of insulin pens. Always consult with your physician before using the needle for your insulin pen, asking him which needle is right for you.

WARNING


1. Do not use the needle if the protective blister paper is broken, in order to prevent infection. Use the needle only once.
2. To make sure you are injecting your insulin correctly, check the flow of insulin according to the instructions for your insulin pen.
3. Once the needle has broken the skin surface, do not change the angle of the insulin pen. It may cause the needle to bend or break off.

CAUTION

1. In accordance with the instructions of your healthcare professional, change your injection site regularly to prevent hardening of the tissue.
2. Store the needle in a dry and cool environment.
3. If insulin continues to drip from the needle after injection, hold the needle 10 seconds longer in the skin to complete the dose effectively.



Manufactured for:
HARMONIUM PHARMA s.r.l.
Via Arona 6
20149 Milano - ITALY
info@harmonium-pharma.com
harmonium-pharma.com

 CHIRANA T. Injecta, a.s.
Nám. Dr. Schweitzera 194
916 01 Stará Turá,
Slovak Republic
www.t-injecta.sk

