


MẪU NHÃN

Bơm tiêm khí máu động mạch không kim
Line Draw™ Arterial Blood Sampling Syringe
with Dry Lithium Heparin for Gases and Electrolytes

Số lô: xem **LOT**

HSD: xem 

Hãng, nước sản xuất: Smiths Medical ASD, Inc./USA

6000 Nathan Lane North, Minneapolis, MN USA

Hãng, nước chủ sở hữu: Smiths Medical ASD, Inc./USA

6000 Nathan Lane North, Minneapolis, MN USA

Nhập khẩu và phân phối bởi: CÔNG TY CỔ PHẦN THIẾT BỊ Y TẾ PT BIOMED

78/1C Bình Lợi - Phường 13 - Quận Bình Thạnh - TP Hồ Chí Minh, Việt Nam

Cảnh báo, HDSD, hướng dẫn bảo quản: xem trong Hướng dẫn sử dụng



GIÁM ĐỐC
Nguyễn Thanh Quang



SECTION 1 - Unit Artwork:

Cavity : Size 182.25mm (W) x 50.4mm (H) X 2
Unit designed for Greydon Genesis digital printer.

EXAMPLE LAYOUT

(Not To Scale. Variable fields are sample data only. Expiration date to be determined at time of production.)

Artwork Composite



Unit Artwork



SECTION 2 - Shelf Carton Labelling:
 Pre-printed label stock: 276mm (W) x 88mm (H)
 Label designed to be printed in P360.

The colors represented in this document may not be a true representation of the assigned pantone color.

EXAMPLE LAYOUT

(Not To Scale. Variable fields are sample data only. Expiration date to be determined at time of production.)

151 0101 B 1/11

Line Draw™ Arterial Blood Sampling Syringe

with Dry Lithium Heparin for Gases and Electrolytes

Caution

Keep away from sunlight

STERILE EO
Sterilized using ethylene oxide

Do not reuse

Keep dry

Do not use if package is damaged

IVD
In vitro diagnostic medical device

Not made with natural rubber latex

RX ONLY CE

Line Draw, Porcex and Smiths Medical design mark are trademarks of Smiths Medical.

Manufacturer:
 Smiths Medical ASD, Inc.
 6000 Auburn Lane West
 Minneapolis, MN 55424 USA
MADE IN USA

European Representative:
 Smiths Medical Czech Republic s.r.o.
 Dolomická 308, Praha 1 - Mladá
 729 01, Prague, Czech Republic
www.smiths-medical.com

smiths medical REF 4041E
 porcex

Line Draw™ Arterial Blood
 Sampling Syringe
 1mL L/S

LOT 123456789
 2013-04-11

2018-04-10
 PC10005913-003

smiths medical

(01)10351688039170(11)130411(17)180410(10)123456789



(01)10351688039170(11)130411(17)180410(10)123456789

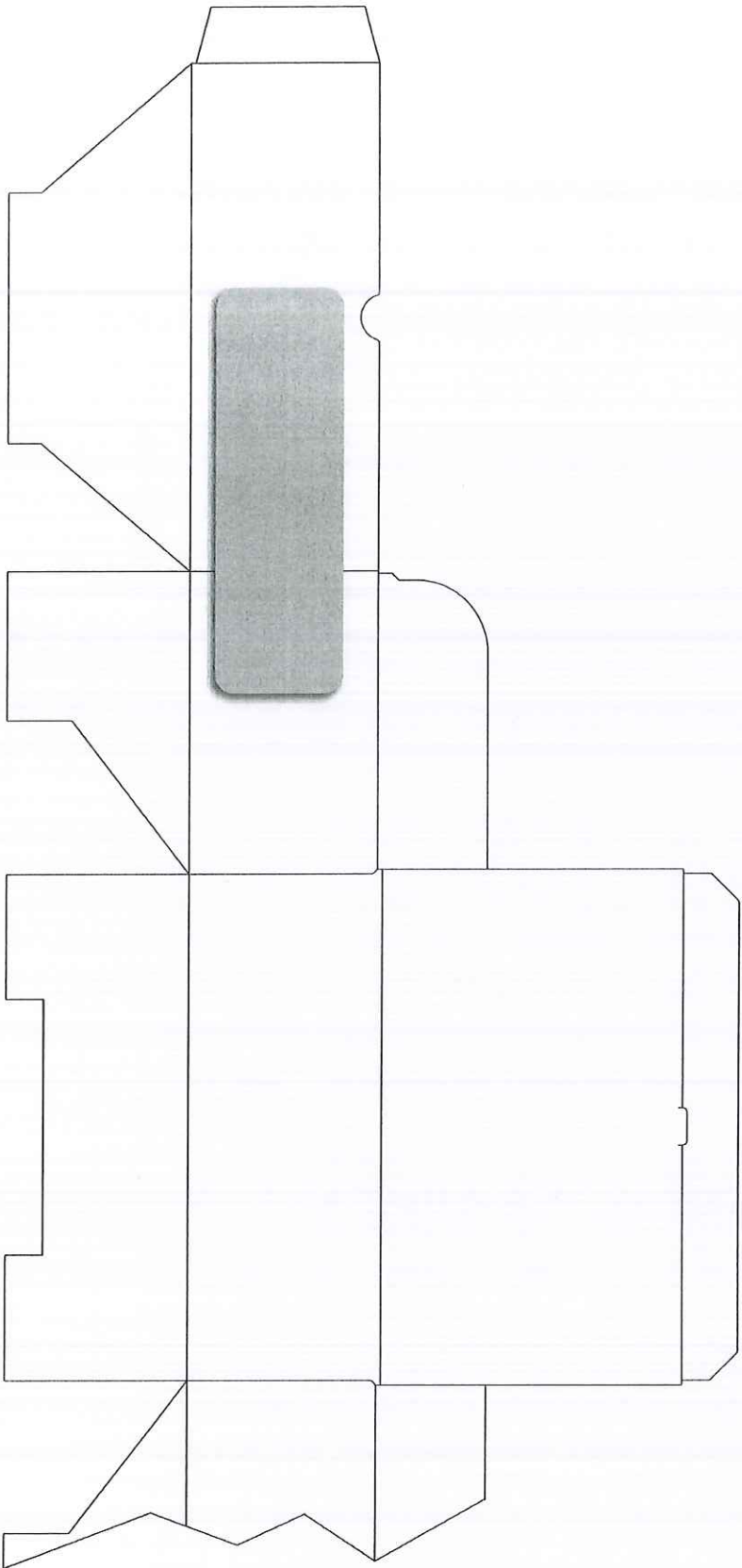


1

10012727 601

SECTION 3 - Shelf Carton Label Placement:

- NOTES: 1) Label should be positioned generally within carton/box depth
- 2) Barcode and variable data should be on narrow panel.



EXAMPLE LAYOUT (NOT To Scale)

SECTION 4 - Transit Carton Labelling:
 Pre-printed label stock: 276mm (W) X 88mm (H)
 Label designed to be printed in P360.

The colors represented in this document may not be a true representation of the assigned pantone color.

EXAMPLE LAYOUT

(Not To Scale. Variable fields are sample data only. Expiration date to be determined at time of production.)

Line Draw™ Arterial Blood Sampling Syringe

with Dry Lithium Heparin for Gases and Electrolytes

caution

Keep away from sunlight

STERILE EO Sterilized using ethylene oxide

Do not reuse

Do not use if package is damaged

Keep dry

Not made with natural rubber latex

IVD In vitro diagnostic medical device

Line Draw™, Portex and Smiths Medical design mark are trademarks of Smiths Medical.

RX ONLY

CE

Manufacturer:
 Smiths Medical ASD, Inc.
 6000 Nathan Lane North
 Minneapolis, MN 55422 USA

EUROPEAN Representative:
 Smiths Medical
 Omroodsd 30d, Harelbeke 1, Melle
 753 01 Harelbeke, Czech Republic

MADE IN USA

www.smiths-medical.com

smiths medical REF 4041E
 portex

Line Draw™ Arterial Blood
 Sampling Syringe
 1mL US


200

LOT 123456789
 2013-04-11
 2018-04-10

PC10013574-003

smiths medical

(01)30351688039174(11)130411(17)180410(10)123456789



(01)30351688039174(11)130411(17)180410(10)123456789



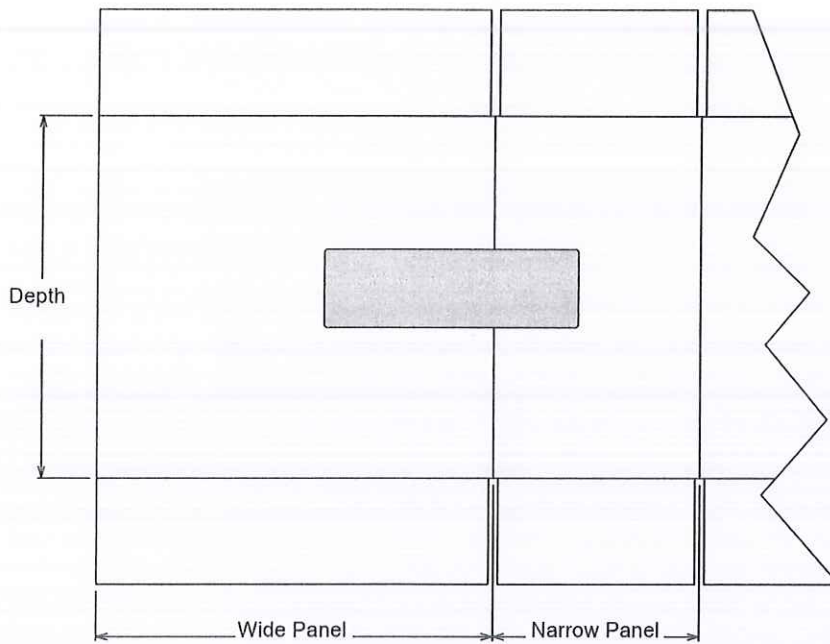
1

16012767-001

SECTION 5 - Transit Carton Label Placement:

EXAMPLE LAYOUT (NOT To Scale)

Generic Label Position



- NOTES:** 1) Label should be positioned centrally within carton/box depth.
2) Barcode and variable data should be on narrow panel.



Blank Carton/Box with Label Applied

