

# HƯỚNG DẪN SỬ DỤNG TIẾNG ANH

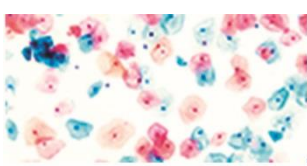
*Tài liệu được xác nhận bằng chữ ký số*

*Hà Nội, ngày 23 tháng 05 năm 2022*

**Người đại diện hợp pháp của cơ sở**

**GIÁM ĐỐC**

**Nguyễn Thị Minh Phương**



# DIA PATH

## CytoPath® NON Gyn filters

*Filters for the preparation of thinlayer cytology of non-gyn specimens*



**Manufacturer: Diapath S.p.A.** via Savoldini 71 – 24057 Martinengo (BG) – Italy –  
Tel (+39)0363-986411 Fax (+39)0363-948000 [www.diapath.com](http://www.diapath.com) [info@diapath.com](mailto:info@diapath.com)

### Intended use

Reagents for in vitro diagnostic use



Code	Packaging
CP202	NON GYN filters (100 pcs)

### Description

Disposable filter made in inert material dedicated for the preparation of liquid-based cytological samples

### Composition

Blue colored cylindrical filters made of acrylonitrile-styrene copolymer

### Characteristics

Filter's dimension (height)	5.5 cm
Membrane dimension	2 cm
Membrane's pore dimension	5 µm

**Warning:** Do not touch the membrane with hands. Do not leave filters package open in order to protect them from dust exposure.

### Instructions for use

Non Gyn filters are intended for disposable with automatic or semiautomatic devices for thin layer preparation of liquid-based cytological samples. The cytological sample, collected into the CytoPath Collection and Washing Solution, is filtered with the above mentioned equipments in order to recover the cells inside it. To avoid mistakes, qualified and trained staff should use the product. Professional use product. The guidelines concerning safety on the workplace must be applied according to current regulations. The tools used for diagnosis must be suitable for diagnostic use in laboratory. Only authorized, trained and competent staff should perform the diagnosis.

### Quality control

The products and the raw materials are entered and constantly monitored by computer systems that allow traceability between batch number of each single product and batches of their raw materials.

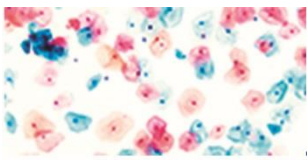
### Storage

Store the product according to the specifications listed on the label. The product, if opportunely stored and integrally packed, is stable up to the expiry date reported on the label. Do not use after expiration date.

If the reagent is not stored as recommended, its performance may change and must be validated by the user. After opening, the reagent is stable up to expiration date but only if stored in its container and in accordance with the specifications listed on the label. It is recommended to close the container tightly after the use.

### Disposal instruction

The expired and/or unused product must be disposed according to local waste regulations, based on danger classification on the label and after possible contaminations evaluation. In some cases, it may be necessary an analytical evaluation to determine the correct waste classification and the danger feature.



# DIA PATH

## Labeling legend



Production



Manufacturer



Storage temperature



Product code



Expiry date



In vitro diagnostic medical device



Photosensitive

For more information, see the MSDS

