

HƯỚNG DẪN SỬ DỤNG TIẾNG ANH

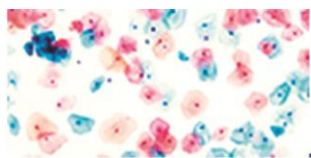
Tài liệu được xác nhận bằng chữ ký số

Hà Nội, ngày 07 tháng 05 năm 2022

Người đại diện hợp pháp của cơ sở

GIÁM ĐỐC

Nguyễn Thị Minh Phương



DIAPATH

Microscope slides for Cytology

CytoPath® Cyto-Slides

Slides for Cytological preparation with CytoPath® Processor



Manufacturer: Diapath S.p.A. via Savoldini 71 – 24057 Martinengo (BG) – Italy –
Tel. +390363-986411 Fax +390363-948000 - www.diapath.com info@diapath.com



Code	Description	Packaging
GP09041	Microscope slides	50 pcs

Intended use and description

Single-use microscope slides dedicated for the usage with different type of liquid-based cytology's samples
White frosted area, resistant to alcohols and solvents, to write easily on the slides

Bevelled edges and spot area indication

Hydrophobic Positive-charged coated treatment to optimize cells' sticking on the slide

Improved cells' homogeneity in the spot

Functional features

Cut edges, 45° angles

Dimensions: 25 x 75 mm ($\pm 0,1$ mm)

Thickness: 1 mm ($\pm 0,1$ mm)

Refraction index: 1.5171

Defects, scratches, bubbles, dust and impurities free

Compatible with thermal transfer printing

Instruction for use

This product is intended as disposable item to be used for the automatic, semi-automatic or manual preparation of cytological samples.

To avoid mistakes, qualified and trained staff should use the product. Professional use product. The guidelines concerning safety on the workplace must be applied according to current regulations. The tools used for diagnosis must be suitable for diagnostic use in laboratory. The diagnosis should be performed only by authorized, trained and competent staff.

Quality control

All batches are under analytical controls useful to define their conformity.

The products and the raw materials are entered and constantly monitored by computer systems that allow traceability between batch number of each single product and batches of their raw materials.

Storage

Store in a clean and fresh environment, protected from dust exposition. Avoid exposure to strong thermic shocks. Protect from humidity.

Store the product according to the specifications listed on the label. The product, if opportunely stored and integrally packed, is stable up to the expiry date reported on the label. Do not use after expiration date.

If the product is not stored as recommended, its performance may change and must be validated by the user.



DIA PATH

Disposal instructions

The expired and/or unused product must be disposed according to local waste regulations, based on danger classification on the label and after possible contaminations evaluation. In some cases, it may be necessary an analytical evaluation to determine the correct waste classification and the danger features.

Warnings and precautions

Carefully read the instructions for usage

Labeling legend



Production



Manufacturer



Storage temperature



Product code



Expiry date



In vitro diagnostic medical device



Keep away from light

