

# Monitoring the whole network



The Vigi alarm provides the security of 3, 5 or 7 channels at the same time. For optimum network security, it is essential to configure the Vigi alarm system in accordance with the elements being monitored.

To perform this simple step, Air Liquide Medical Systems offers two configuration modes: the first via Vigi Access software, and the second via the Vigi configuration keyboard.

## 1<sup>st</sup> mode



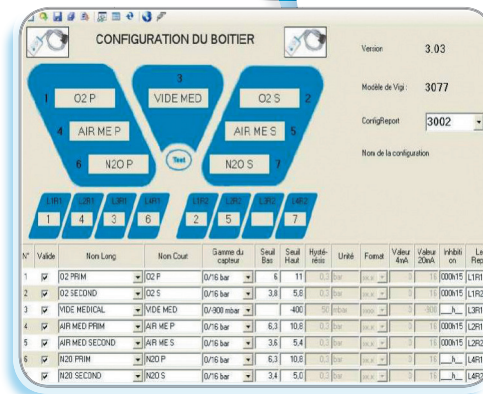
Install Vigi Access



Prepare to configure Vigi



Connection and Vigi configuration



Vigi Access software PC interface

Configuration remote control



## 2<sup>nd</sup> mode



Connecting configuration keyboard to Vigi



Vigi configuration

### Accessories

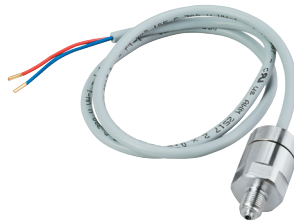
Designation	Reference	Type	Value range	Fitting
Vigi configuration keyboard	AF022500			
Cable USB / RS232 for PC/Vigi connection	YR115800			
Vigi Access – Free software	Contact us			
Pressure sensor 4-20 mA	AF004000	Analogue	0 / 16 bar	M10 x 100
Pressure sensor 4-20 mA	AF004200	Analogue	0 / 250 bar	1/4" gas
Vacuum sensor 4-20 mA	AF004100	Analogue	0 / -900 mbar	M10 x 100
Vacuum sensor 4-20 mA	AF004300	Analogue	0 / -1000 mbar	M10 x 100
HP switch with 2 threads	AF070600	Dry contact	0 / 240 bar	1/4" gas
HP switch with 3 threads	AF070800	Dry contact	0 / 240 bar	1/4" gas
Pressure watcher on primary network (8 bar)	AF001600	Dry contact	3,5 / 10 bar	Ø 12 mm
Pressure watcher on secondary network (3,5 bar)	AF001700	Dry contact	2,5 / 5 bar	Ø 12 mm

# Pressure sensor

Analogue pressure sensors are the key components in pressure monitoring. Installed all along the network, from the high pressure gas station to the wall outlet, they are Vigi's information source.



Analogue pressure sensor  
4-20 mA & 0 / 250 bar



Analogue vacuum sensor  
4-20 mA & 0 / - 900 mbar

### Versatility

- Measurement range from 0 to 250 bar for gases and to -1000 bar for vacuum
- Adaptable to all medical gases

### Safety

- Continuous monitoring of medical gas networks from the high pressure gas station to the wall outlet

### Performance

- Immediate data transmission to Vigi
- Greater accuracy: pressure calculated in real time to within one tenth

### ▶ Network pressure under control

- Continuous pressure measurement
- Perfect precision, data expressed to within one 10<sup>th</sup>

## Specifications

Electrical connection	Mini-DIN, Pin 3: +Power, Pin 1: Signal, Red: +Power, Blue: Signal
Regulatory compliance	CE marked product, distributed by Air Liquide Medical Systems S.A. Read the user manual carefully. ISO 60601-1-8 standard.
Life time	10 years

## References

Designation	Reference	Type	Value range	Fitting
Pressure sensor 4-20 mA	AF004000	Analogue	0 / 16 bar	M10 x 100
Pressure sensor 4-20 mA	AF004200	Analogue	0 / 250 bar	1/4" gaz
Vacuum sensor 4-20 mA	AF004100	Analogue	0 / -900 mbar	M10 x 100
Vacuum sensor 4-20 mA	AF004300	Analogue	0 / -1000 mbar	M10 x 100

## Accessories and spare parts

Designation	Reference	Detail
Adaptor 1/4" gas male - M10 x 100 female (x 5)	CX090500	
Adaptor 1/4" gas female - Ermeto	AF070700	
Adaptor 14x16 mm with M10 x 100 fitting	BB011100	for vacuum analogue sensor
Flat gasket (x10)	BY008700	for 0 / 16 bar sensor or vacuum sensor in M10 x 100
Copper gasket 11x6x2 mm (x10)	YJ101600	for 0 / 250 bar sensor