

# Other equipments

## SOFT PARTITIONS



Single



Double



Triple



Type (Width)	Color				
	Pink	Yellow Green	White Gray	Blue	Peach
Single (901mm)	KC-031PN	KC-031YG	KC-031WG	KC-031BL	KC-031PE
Double (1,803mm)	KC-032PN	KC-032YG	KC-032WG	KC-032BL	KC-032PE
Triple (2,705mm)	KC-033PN	KC-033YG	KC-033WG	KC-033BL	KC-033PE

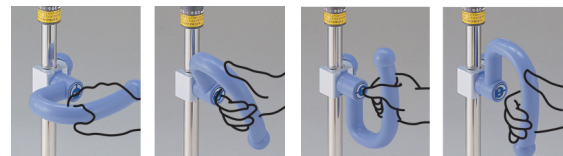
●D360 x H1,700mm ●Product weight: Single approx.4.8kg, Double approx. 9.4kg, Triple approx. 13kg ●Frame: Aluminum (alumite treatment), Aluminum die cast (melamine painting) ●Leg part: Steel (acrylic painting) ●Screen: polyester 100% (anti-bacteria, fire prevention, soil-release finish)

## I.V. STAND



### Flexible Grip

According to the condition of the patient, there are a variety of angle to use the grip.



### Good mobility

Low balance, Unique casters for preventing them from getting stuck in the ditch of elevators. In addition, it reduces the stuck of dusts in it, and it is easy to overhaul.



### Easy operation

Upper rod stopper, and angle adjustment button is easy to use.



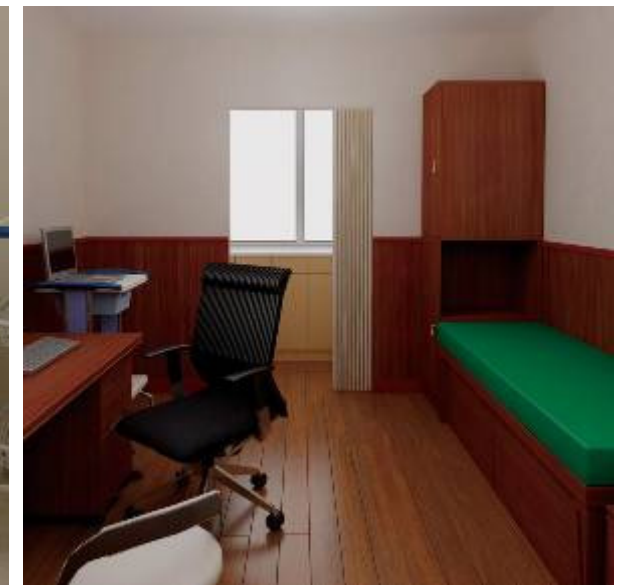
### ACCESSORY Urine Bag Holder



Model No.  
KC-508

Model No.  
KC-058

# Examination Table Series



Efficient & Safe  
care

A wide range of  
variety

# Examination Table for echography

Designed for ultrasonic exam



## Unique designed base

For easier cardiac ultrasonography, the left side part cushion of the base can be detached. And the cushion can be stowed under the base. The head section of the bottom is slightly inclined for easy neck ultrasonography.



## Soft base (thickness: 135mm)

For patient's comfort, the thickness of the base is 50mm thicker than our standard examination tables for improving the cushioning characteristics.

## Adjusters

When the table is positioned on a non-flat floor surface, four adjusters can be used to make the necessary adjustments without the need for tools.



## Seamless Height adjustment (KC-2570A, B, C)

The examination table can be raised or lowered to any height within the range of 485 mm to 1035 mm.

## Foot switch (KC-2570A, B, C)

This examination table can be operated by foot pedal even if the caregiver can not use her/his hands. Height settings also can be assigned to the M1 and M2 pedals as desired. The examination table can then be raised or lowered automatically to that height with the operation of a single pedal.



## Electric type



Width	Color			Measurement	Product weight
	White	Gray	Yellow Green		
700mm	KC-2570A	KC-2570B	KC-2570C	L1,900 x W700 x H485 to 1035mm	88kg

●Base: plywood, vinyl leather with urethane foam ●Main frame: steel sheet and pipe with double coating  
●Telescopic Cover: polystyrene resin ●Maximum patient weight: 138kg

## Fixed height type



Width	Color			Measurement	Product weight
	White	Gray	Yellow Green		
700mm	KC-2675A	KC-2675B	KC-2675C	L1,900 x W700 x H535mm	40kg

●Base: plywood, vinyl leather with urethane foam ●Main frame and foot section frame : steel sheet and pipe with double coating  
●Maximum patient weight: 138kg

# Motorized Examination Table

Seamless height adjustment for wide-ranging support



## Seamless height adjustment

Examination table can be setup to suit any physician sitting position or standing position, or any mounting or dismounting action of the patient.



## Foot switch

Elevation pedals can be used to seamlessly adjust the height between 400 and 950mm; furthermore, two frequently used positions can be stored using the Position Memory Function. As a result, a single pedal operation can be carried out to have the table automatically adopt the required height.



## Telescopic cover

A Telescopic cover has been adopted to improve both safety and maintainability (through wiping). And the Base frame also has been designed for easy mounting and dismounting of the patient.

## Adjusters

When the table is positioned on a non-flat floor surface, four adjusters can be used to make the necessary adjustments without the need for tools.



Width	Color			Measurement	Product weight
	White	Gray	Yellow Green		
650mm	KC-2510A	KC-2510B	KC-2510C	L1,900 x W650 x H400 to 950mm	75kg
700mm	KC-2520A	KC-2520B	KC-2520C	L1,900 x W700 x H400 to 950mm	80kg

●Base: plywood, vinyl leather with urethane foam ●Main frame: steel sheet and pipe with double coating  
●Telescopic Cover: polystyrene resin ●Maximum patient weight: 138kg ●With pillow

## Examination Table with Back and Knee raise function



### Back and Knee angle adjustment

Back and knee angle can be adjusted individually by the operation levers to keep the proper posture during exams. The operation levers are located at both side. Either operation lever is available for operation so that the table can be installed against a wall.

### 4-Part-Base for reducing the patient's pressure of abdominal area when using back raising function

The know-how (4-part-base) which Paramount bed has adopted in the table. Compared to 3-part-base, it can reduce the patient's pressure of abdominal area. By using Knee raising function together, the slippage of the patient's body is minimized when using back raising function. In addition, the thickness of the base is 20mm thicker than current tables to improve the cushion characteristics.

### Adjusters

When the table is positioned on a non-flat floor surface, four adjusters can be used to make the necessary adjustments without the need for tools.

Width	Color	Measurement	Product weight
	Yellow Green		
650mm	KC-2655C	L1,900 x W650 x H450 to 770mm	45kg

- Back raising: 0 to 70° Back raising: 0 to 25°
- Base: plywood, vinyl leather with urethane foam ● Main frame and foot section frame: steel sheet and pipe with double coating
- Maximum patient weight: 153kg

## Examination Table for massage



### Arm rest for prone posture

The arm rest can be set at lower position for easy prone posture. Head (face) base also is lowered with the arm rest for easy breathing. The arm rest can be adjusted to one of nine heights (2 cm each)

When raising the arm rest at highest position, the base becomes flat and can be used as a standard examination table.



### Comfortable base

the thickness of the base is 20mm thicker than current tables to improve the cushion characteristics.

### Adjusters

When the table is positioned on a non-flat floor surface, four adjusters can be used to make the necessary adjustments without the need for tools.



Width	Color	Measurement	Product weight
	Yellow Green		
650mm	KC-2666C	L1,900 x W650 x H620mm	40kg

- Arm rest height: approx. 460 to 620 mm (20 x 9 steps)
- Base: plywood, vinyl leather with urethane foam ● Main frame, support pillar, foot section: steel sheet and pipe with double coating
- Up and Down leg: steel sheet and pipe with melamine resin ● Maximum patient weight: 300kg

## Examination Table with casters



### Accessory receptacles at each side of the bed

The table has the option receptacles at both sides of the table which side rail and IV pole can be installed. When not using, it can be stowed under the base.



### 125mm dia. Casters

The caster has locking pedal at each caster. The locking system works with right and left. So if the table is installed against a wall, the casters can be locked from the other side.



Width	Color			Measurement	Product weight
	White	Gray	Yellow Green		
650mm	KC-2614A	KC-2614B	KC-2614C	L1,900 x W650 x H450mm	40kg

- Caster: 125mm dia. ● Base: plywood, vinyl leather with urethane foam ● Main frame and foot section frame: steel sheet and pipe with double coating
- Maximum patient weight: 153kg
- \*when the table is transferred to some place with patient, please attach side rails. If the purpose is for transferring, please use the stretcher instead of the table.

## Hydraulic Examination Table



### Hydraulic elevation pedal

The pedal can be used to adjust the height from 435 to 765 mm hydraulically.



### Adjusters

When the table is positioned on a non-flat floor surface, four adjusters can be used to make the necessary adjustments without the need for tools.



Width	Color			Measurement	Product weight
	White	Gray	Yellow Green		
650mm	KC-2310A	KC-2310B	KC-2310C	L1,900 x W650 x H435 to 765mm	45kg

Width	Color		Measurement	Product weight
	Blue			
650mm	KC-237		L1,900 x W650 x H450 to 770mm	45kg

- Base: plywood, vinyl leather with urethane foam
- Main frame: steel with double coating
- Maximum patient weight: 100kg

# Examination Table

Standard type table : height 450mm / 600mm



Surface height	Color			Measurement	Product weight
	White	Gray	Yellow Green		
450mm	KC-2615A	KC-2615B	KC-2615C	L1,900 x W650 x H450mm	31kg
600mm	KC-2616A	KC-2616B	KC-2616C	L1,900 x W650 x H600mm	32kg

- Base: plywood, vinyl leather with urethane foam ●Main frame and foot section frame: steel with double coating
- Maximum patient weight: 300kg

## Accessories

### Accessory receptacle

Width	Model No.
700mm	KC-22M
700mm	KC-20M
650mm	KC-20
650mm	KC-21S



KC-22M

If it is attached to examination table, the bed side rail can be installed on it.

When not using it, it can be stowed under the base.

### Arm rest (table)

Model No.
KC-28A
KC-28B



It can be installed on both sides.

\* accessory receptacle is necessary to use it.

- surface: vinyl leather with urethane foam ●Color: Gray
- Core Material: plywood
- frame: steel

### Compatibility table

Model No.	KC-2570C	KC-2675C	KC-2510 A/B/C	KC-2520 A/B/C	KC-2655C	KC-2666C	KC-2614 A/B/C	KC-2310 A/B/C	KC-237	KC-2615 A/B/C	KC-2616 A/B/C
Accessory receptacle KC-22M	—	●	—	—	—	—	—	—	—	—	—
Accessory receptacle KC-20M	●	—	—	●	—	—	—	—	—	—	—
Accessory receptacle KC-20	—	—	●	—	—	—	—	—	—	—	—
Accessory receptacle KC-21C	—	—	—	—	—	—	—	—	—	●	●
Arm rest KC-28A *2	—	—	●*1	●*1	—	—	—	—	—	—	—
Arm rest KC-28C *2	—	—	—	—	—	—	—	—	—	●*1	●*1

## Accessories

### Examination table cover

Width	Model No.
700mm	KC-257S

For the table for echography only  
 ●Cover set for main base and cushion cover ●With round elastic band and string for fixing the cover ●cotton 100%, toweling ●Surface: anti-bacteria, anti-mold, deodorization, anti-fade finishing  
 ●Reverse side: with polyurethane resin coating ●Chemical proof (against chlorine), heatproof(180°C) finish



### Examination table cover

Width	Model No.
650mm	KC-265S

Examination Table with Back and Knee raise function only  
 ●Surface material: toweling, cotton 100%  
 ●Surface: anti-bacteria, anti-mold, deodorization, anti-fade finishing  
 ●Reverse side: with polyurethane resin coating, waterproof  
 ●Chemical proof (against chlorine), heatproof(180°C) finish



### Examination table cover

Width	Model No.
700mm	KC-30M
650mm	KC-30

Box type sheet  
 ●Surface material: toweling, cotton 100%  
 ●Surface: anti-bacteria, anti-mold, deodorization, anti-fade finishing  
 ●Reverse side: with polyurethane resin coating, waterproof ●Chemical proof (against chlorine), heatproof finish

### Pillow for decubitus (lateral) position

Model No.
KC-20PC

It can be used to keep the posture of the patient when he/she is in lateral position.



- measurement: L750 x W375 x H130mm
- Product weight: 2kg
- Surface: vinyl leather with urethane foam
- Color: Yellow Green

### Grip

Model No.
KC-257G

It can be Attached at the base on head side to keep the posture of the patient when he/she is in lateral position



### Overlay

Model No.
KC-257M

- For base and cushion
- Thickness: 20mm
- With elastic band for fixing



### Caster set

Model No.
KC-257C

It can be attached at the bottom for easy transferring of the table.  
 ●measurement: 65mm dia.  
 ●All of the caster has a stopper.  
 Note: the height of the table is approx. 60mm higher.



### Compatibility table

Model No.	KC-2570C	KC-2675C	KC-2510 A/B/C	KC-2520 A/B/C	KC-2655C	KC-2666C	KC-2614 A/B/C	KC-2310 A/B/C	KC-237	KC-2615 A/B/C	KC-2616 A/B/C
Examination Table Cover KC-257S	●	●	—	—	—	—	—	—	—	—	—
Examination Table Cover KC-265S	—	—	—	—	●	—	—	—	—	—	—
Examination Table Cover KC-30M	—	—	—	●	—	—	—	—	—	—	—
Examination Table Cover KC-30	—	—	●	—	—	—	●	●	●	●	●
Pillow for lateral position KC-20PC	●	●	●*1	●*1	—	—	●*1	●*1	●*1	●*1	●*1
Grip KC-257G	●	●	—	—	—	—	—	—	—	—	—
Overlay KC-257M	●	●	—	—	—	—	—	—	—	—	—
Caster set KC-257C	●	—	●	●	—	—	—	—	—	—	—